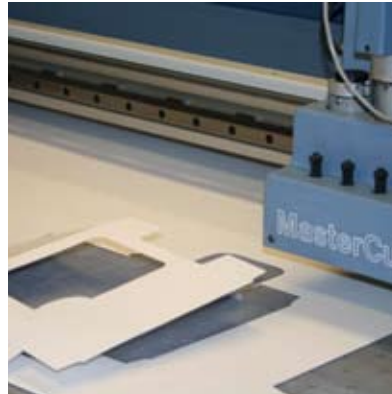


## Have you changed address?

Let us know by sending an e-mail to [info@stfi.se](mailto:info@stfi.se).

# B



Students from the packaging design course at Nackademin use the prototype laboratory.

Beatrice B. Johansson

# Creative laboratory for packaging

“Our new prototype lab for developing packaging is not only an important resource for our research work on new materials and applications but also for our work on packaging design and production methods,” says Beatrice Johansson at STFI-Packforsk. “This lab is a wonderful asset, when it comes to our courses on packaging. Also, students from the packaging design course at Nackademin have been booked in here for quite a long time.” Beatrice, together with Gerald Begéli, has developed the prototype lab at the STFI-Packforsk office in Kista, a suburb of Stockholm.

The prototype lab contains many different kinds of tools and machines for

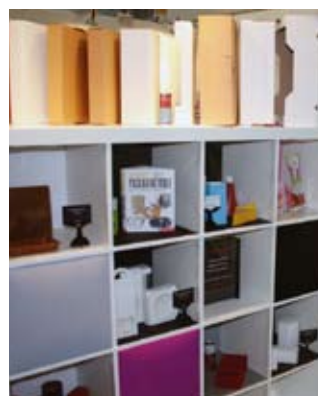
making packages, all gathered under one roof. In the lab, it is possible to make various kinds of packages, e.g. boxes, corrugated boxes, vacuum packaging, packages with modified atmospheres and shrink film and trays using thermoforming. Bottles can even be made there.

Beatrice continues, “This lab gives us the chance to be inventive. In addition, it makes it possible for our research projects and external customers to fully test ideas and concepts in a virtual situation. For instance, to sell a new material for a certain field of application, it is definitely more effective to show a product that we’ve created here instead of a drawing or a sample cut-out from

a sheet of paper or board. Research projects that need to produce demonstrators are therefore going to benefit a great deal from the equipment we’ve gathered here.”

In the future, Beatrice would like to expand the operations and work in an integrated way with design issues, new materials and functions for packaging. She can see more collaboration with design institutes, such as that which, last year, led to Kofes, a sample of a sample of a material made from PLA. ●

**CONTACT:** [beatrice.johansson@stfi.se](mailto:beatrice.johansson@stfi.se)



A number of laboratory prototypes were shown at the Swedish easyFairs PACK & EMBALLAGE Fair in Stockholm on 21-22 October, 2008.

 **I det nya prototypplabbet** vid STFI-Packforsks kontor i Kista, finns olika verktyg och maskiner för framställning av förpackningar samlade under ett tak. Här går det att ta fram en mängd olika typer av förpackningar, som exempelvis kartongkapslar, wellpapp lådor, vakuumpförpackningar, förpackningar med modifierad atmosfär, krympfilm och tråg. Till och med flaskor går att ta fram.

– Det nya prototypplabbet för förpackningsutveckling är en viktig resurs för vår forskning om nya material och tillämpningar, men också för vårt arbete med förpackningsdesign och tillverkningsmetoder, säger Beatrice Johansson vid STFI-Packforsk.

Beyond is published by STFI-Packforsk AB | Legally responsible for the publication: Gunnar Svedberg ([gunnar.svedberg@stfi.se](mailto:gunnar.svedberg@stfi.se))  
Editor: Marianne Lockner ([marianne.lockner@stfi.se](mailto:marianne.lockner@stfi.se)) | ISSN: 1652-6503 | Print: SIB-Tryck, Norsborg



STFI-Packforsk AB  
Box 5604, SE-114 86 Stockholm, Sweden  
Phone: +46 8 676 70 00  
Fax: +46 8 411 55 18  
[info@stfi.se](mailto:info@stfi.se),  
[www.stfi-packforsk.se](http://www.stfi-packforsk.se)

#### Subsidiaries:



LignoBoost Demo AB  
[www.lignoboost.com](http://www.lignoboost.com)



PFI AS  
Member of the  
STFI-Packforsk group  
[www.pfi.no](http://www.pfi.no)



STFI-Packforsk UK Ltd.  
[www.stfi-packforsk.eu/edge](http://www.stfi-packforsk.eu/edge)

# New Cluster Research Programme ready for take-off

Page 4

Map shows way to improved paper

Quick results with the Curl-O-Meter

Successful trial to replace oil with new lignin biofuel

Creative laboratory for packaging

# Map shows way to improved paper

Air permeability, permeance, is an important property in many paper qualities, where any deterioration in it can cause problems for converters and end-users. These problems can be the result of printing inks or unevenness in the drying during the production of a paper, for instance. The STFI-Packforsk Local Permeance Measurement Device measures air permeability at a very large number of points on a sample and produces a map viewing the variations in the permeability.


Being able to print information directly on to paper sacks and vacuum cleaner bags, for example, can be of help to the fillers or the consumers. Then enclosing instructions and product leaflets becomes unnecessary. There is also a lot of marketing value in utilising the design of a sack for marketing and selling. There is an increasing demand from the market for very good printing quality on sacks. Unfortunately, this printing means that the sustainability of a sack becomes impaired.

Mikael Bouveng, responsible for this measurement technique at STFI-Packforsk comments, "If you're filling a sack with cement, for example, the air has to escape to make room for the cement going into it. Otherwise, the sack will burst. Printing ink blocks the pores in the paper and prevents the air from escaping."

By this, Mikael means that the more the printing ink put on the paper, the worse the permeability. When 4-colour full tone printing is used, there are not many places for air to be released. When sacks burst during the filling process, compensation claims are made all the way back through the chain of supply. This presents a problem situation for the sack paper producers that very often do not have any knowledge about the further converting or handling of their products..

Problems can be traced with measurement techniques. Alexander Waljanson, who carries out these analyses, describes how this works. "With a standard instrument, measurements are made on individual points over a large area, up to 10 cm<sup>2</sup>, depending on the instrument. In this case, it's necessary to make several measurements, which, together, give a mean value but it's impossible to see the variations. Essential information can be missed. On the other hand, the STFI-Packforsk instrument measures the permeability of an A4 sample on about 6,000 points, where each point measured has a diameter of 2 mm. The mean value of the measured points is determined using interpolation, which gives a chart where it is possible to see the variations in the permeability and to localise any possible problem areas. Each point has a co-ordinate that can be matched against other properties."

"The concept is that the measurements of permeability should be included in a series of analyses, where the properties are mapped out and the vari-

 **Luftgenomsläpplighet**, permeans, är hos många papperskvaliteter en viktig egenskap, där en försämring kan innebära problem för konverterare och slutanvändare. Problemen kan bli bero på ojämnheter i torkningen under pappersproduktionen eller tryckfärg.

– Om man ska fylla en säck, till exempel med cement, måste luften släppas ut för att ge plats för innehållet. Annars spricker säcken. Tryckfärg täpper till papperet och hindrar luften från att släppas ut, säger Mikael Bouveng, som ansvarar för mättekniken vid STFI-Packforsk.

Med instrumentet Local Permeance Measurement Device mäts luftgenomsläppligheten i ett mycket stort antal punkter. Resultatet ger en kartbild över permeansvariationerna som är vägledande vid produktutveckling.

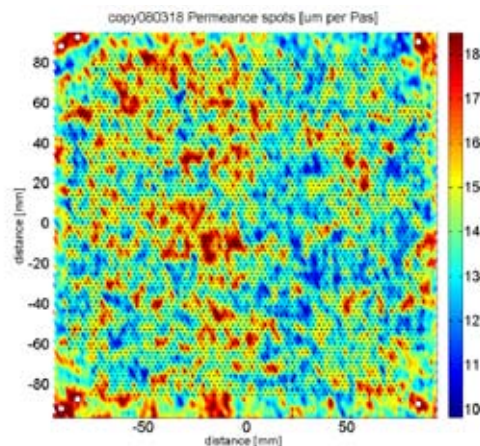
ous properties can be matched with each other," Mikael adds.

The technology and the instrument were developed in a Research Project, but they can now be used by everyone, in the research work being done by STFI-Packforsk and in assignments for individual customers.

Mikael continues, "At the present time, for example, we're studying the influence of the drying process on permeability. Variations in air permeability are thought to be a sign of uneven drying and, as a result, irregularities in the press and drying sections of a paper machine. This instrument is quite a unique one in its field, where there's no other equipment that can do the same job."

"These analyses can also be used in product development, for instance, when a mill wants to produce new qualities with lower basis weights," he says in conclusion. ●

**CONTACT:** mikael.bouveng@stfi.se



Mikael Bouveng and Alexander Waljanson demonstrating the Local Permeance Measurement Device. This unique equipment produces a map viewing variations in the permeability. The red areas indicate high permeance.

# Quick results with the Curl-O-Meter



Jorma Kiviranta is the Development Manager at M-real in Äänekoski, Finland. He is one of the people who led the work of testing the Curl-O-Meter.

The Curl-O-Meter, a new measurement instrument from STFI-Packforsk, gives paper makers faster information on the risk of curl or twist occurring in paperboard (see also Beyond 1/2007). Trials at two board mills showed that the Curl-O-Meter can contribute to economical production advantages through better control of the production process.

Even when a mill produces paper and board without visible curl, the problem can be hidden in the product. It is when the product is moistened that curl and twist can be a problem. This often hap-

## FACTS

The technology in the Curl-O-Meter is based on 3D Triangulation, where a laser line is projected on to the paper or board sample and viewed by a camera from a different angle. A model of the sample surface is calculated in the camera programme and the curl and twist values are written to a report file. The samples can be fed into the instrument automatically or manually. The camera can compensate for a certain misalignment of the samples, which makes the positioning much less critical. In order to extend the characterisation, the Curl-O-Meter has two means of changing the humidity in the samples. There is an IR dryer and a conditioning chamber to expose the samples to moist air.

pens during converting and printing and also when the packages are being used. This is the reason why, as early as during the production stage, it is vital to be able to ensure that no tendency for curling and twisting is built into the products. As a result, it looks like the Curl-O-Meter will be able to give board mills entirely new opportunities. So far, trials have shown that the measurement data are of very good quality and that they can be used to set the discharge opening in head boxes and other factors, so that the likelihood of curl and twist occurring is reduced or disappears completely.

Jorma Kiviranta is the Development Manager at M-real in Äänekoski, Finland. He is one of the people who led the work of testing the Curl-O-Meter.

“The Curl-O-Meter is faster and more accurate than previous models in measuring curl and twist,” states Jorma. “But, most of all, the Curl-O-Meter provides information on where adjustments should be made in the process to avoid them occurring. No earlier methods have been able to manage this.”

M-real in Äänekoski has run trials with this equipment for slightly more than 6 months. The focus has been on trying out the technique while, as yet, the potential of the information produced by the meter has not been fully utilised. What has been shown is that this method produces very reliable results.

“We’re interested in taking this measurement technique further and buying the Curl-O-Meter for each of the four board mills that M-real has in Finland,” Jorma continues. “We’re therefore having discussions with STFI-Packforsk about how the meter could be made more

user-friendly, compared to the prototype we’ve used in the trials. We would prefer it to be easier to use so that the testing will go faster during production.”

Jon Lofthus, a Project Manager at STFI-Packforsk, says, “The Curl-O-Meter is a project that is in great demand by the industry. STFI-Packforsk has carried out the entire development work in direct co-operation with the industry in a Cluster called Engineering Paperboard for Packaging Performance. So far, we’ve collaborated with two mills to test and further develop the Curl-O-Meter. In addition, we’ve had requests from several other companies to install the meter. This is certainly a technology that the industry has been waiting for, for a long time.” ●

**CONTACT:** [jon.lofthus@stfi.se](mailto:jon.lofthus@stfi.se)



## Problem med curl och twist

blir ibland synligt först då papperet/kartongen fuktas, som vid konvertering och tryckning. Därför är det viktigt att redan vid tillverkningen kunna försäkra sig om att inga tendenser till detta byggs in i produkten. STFI-Packforsks nya mätteknik Curl-O-Meter ger pappers- och kartongtillverkare snabbare besked om riskerna och möjlighet att förhindra problemen.

– Framför allt ger Curl-O-Meter information om var i processen man bör ändra inställningar för att undvika curl och twist, säger Jorma Kiviranta, M-real i Äänekoski, och en av dem som lett arbetet med att testa Curl-O-Meter.

Utvecklingsarbetet i direkt samarbete med industrin, och hittills samarbetat med två bruk för att prova och vidareutveckla tekniken.



# Next Cluster Research Programme ready for take-off

A Research Programme that is on the cutting-edge and focusing on the future

The Cluster Research Programme, running since 2006, has produced several significant results and innovations. When the Programme terminates at the end of this year, it will be time for the next one to begin.

“We’ve been working for one and a half years to produce a Research Programme that is on the cutting-edge and focusing on the future needs of our customers,” comments Anders Pettersson, who is responsible for the Programme at STFI-Packforsk. “In on-going discussions with our Partner Customers and new partners, we’ve put together a collection of Clusters that have great potential in making technical achievements in the areas we work in.”

Anders has had positive response to the Research Programme. “In spite of the current difficulties that our line of business in Europe is experiencing, we’re very pleased to have received a positive response from our Partner Customers. Although, as things stand today, the size of the Programme will be smaller than the present one. The total commitment of our customers is nevertheless still there, to the benefit of several bilateral research projects that are developing the results produced in the Research Programme.”

“These projects are very important, since they make it possible for us to develop innovations and ideas even fur-

ther. It’s in this way that we contribute to our customers’ profitability and competitiveness.”

Anders continues, “The aim of the new Research Programme is to focus on a smaller number of Clusters than the nineteen to twenty-one that are in the current Programme. And so, in January, sixteen Clusters will be starting up. These span the entire chain from fibres and pulp to paper, printing and packaging.”

There will be a certain shift in the contents of the new Programme.

“The biggest area of growth is in chemical pulp production, including the biorefinery. The size of these particular Clusters is increasing. When it comes to packaging and printed products, it is preferable to work more bilaterally or in smaller groupings and not within the framework of the Cluster Research Programme.”

There will be some 20 companies participating in the Programme, but that number could change during its progress. It is not unusual for new Partner Companies or Invitees to join a Research Cluster during the run of a programme. For instance, it was as recent as last winter that Mercer Pulp of Germany became a Partner Customer and, in addition, joined the STFI-Packforsk Biorefinery Cluster in the present Research Programme. A number of Invitees, i.e. companies that have chosen to participate in individual clusters, will also be added.

There might be adjustments made

to the forthcoming Cluster Programme in November and December, when the content of each Cluster will be adapted to the needs and interests of the participating companies.

“We’ll also apply for financial matching for certain Clusters from the Swedish Energy Agency and the Sectoral R&D Programme for the Forest-based Industry in Sweden. The specific content of each Cluster has not yet been decided on. However, on the next page there is a brief summery of each Cluster, showing the direction that they’ll probably take. ●

**CONTACT:** anders.pettersson@stfi.se



**Den 1 januari 2009** startar det nya klusterforskningsprogrammet som gäller 2009-2011.

– Vi har jobbat i ett och ett halvt år med att ta fram ett vasst och framtidsanpassat forskningsprogram, säger Anders Pettersson. I kontinuerlig dialog med våra avtalskunder och nya partners har vi komponerat en samling kluster med stora möjligheter att bereda tekniska landvinningar inom våra verksamhetsområden.

Det nya programmet består av 16 kluster som spänner över hela kedjan från fiber och massa, till papper, tryck och förpackningar. De starkast växande klustren finns inom kemisk massatillverkning inklusive bioraffinaderi.

I programmet deltar STFI-Packforsk avtalskunder. För andra företag finns möjlighet att delta i enskilda kluster som s k Invitee.

# Cluster Research Programme 2009–2011

## 1 Chemical Pulp

The aims are to radically change and improve the way in which kraft pulps are produced today, to make the most efficient use of the wood raw material and to link the different process technologies and conditions to the outcome of the pulp properties and the impact on the economy of the process.

Contact: Fredrik Lundqvist, Lennart Salmén, Peter Axegård

## 2 Chemical and Energy Recovery in the Kraft Pulp Mill

The main aim is to reduce the negative impact of non-process elements. This is to be achieved by means of an underpinning of the process chemistry under technical conditions, leading to methods and action plans for mills to follow.

Contact: Rickard Wadsborn, Peter Axegård

## 3 Biorefinery

Aims to develop new technologies for refining wood-derived components from process liquors and forestry residues into added-value chemical products and materials.

Contact: Birgit Backlund, Peter Axegård

## 4 Energy and Biofuels

Aims to identify and develop cost-effective technologies that can reduce energy consumption in the major unit operations of the pulp and paper mill and/or increase the value of the by-products and side streams as energy.

Contact: Niklas Berglin, Peter Axegård

## 5 Mechanical Pulping

The aim is to reduce energy consumption in the refining of mechanical pulps by at least 20%. The result will be a more competitive production of mechanical and chemi-mechanical pulps.

Contact: Lars Johansson(PFI), Lennart Salmén

## 7 Optimised Fibres for Pulp and Paper Products

The aim is to improve the properties of products or to lower production costs by improving the selection and processing of fibres.

Contact: Sven-Olof Lundqvist, Ulla-Britt Mohlin

## 8 Stock Preparation for Reduced Energy and Quality Improvement

The aim is to produce stocks that allow a reduction in the grammage of paper and paperboard by 10%, through a more efficient use of available resources (energy and fibres); in addition, to reduce energy consumption by an additional 10% in stock preparation.

Contact: Ulla-Britt Mohlin, Claes Holmqvist, Hannes Vomhoff

## 10 Applied and Exploratory Paper Chemistry

Aims to expand property space of paper and to develop new, renewable nanoelements and modified nanoelements that are suitable for industrial applications for conventional paper and board materials as well as newly developed materials.

Contact: Tom Lindström, Mikael Ankerfors

## 11 Improved Dewatering

The main aim is an optimization of the dewatering process conditions on paper, board and pulp machines and to develop methods for a quantification of the evenness of dewatering, based on infrared thermography, as well as an on-line surface roughness measurement.

Contact: Hannes Vomhoff, Fredrik Rosén

## 12 Paper Mechanics

The aim is to provide paper making strategies for increasing uniformity and making substantial improvements to selected paper properties, without compromising other important paper properties.

Contact: Petri Mäkelä, Christer Fellers, Lennart Salmén, Tom Lindström

## 13 Web Structure

The main aims are to provide forming strategies and novel concepts, resulting, for example, in more robust forming processes with larger operational windows, more consistent product quality, improved dimensional stability, fewer in-plane sheet variations, increased efficiency when adding chemicals/fillers and better possibilities for scaling-up chemical strategies from laboratory scale to mill scale.

Contact: Claes Holmqvist, Daniel Söderberg

## 15 Fibrous Packaging Material

The aims are to develop and demonstrate chemical and process technologies for the production of board with extremely high bulk, as well as technologies for the production of board with an optimal ZD design.

Contact: Marco Lucisano, Mikael Nygård

## 16 Future Papyrus

The aims are to develop concepts for increasing and placing the filler content and to improve product quality, runnability and the relationships between formation and retention.

Contact: Daniel Söderberg, Mikael Ankerfors, Michael Karathanasis

## 18 Newsprint of Tomorrow

The aims are to achieve a more efficient and, as a result, a competitive production process by creating tools and strategies for handling the mechanisms governing surface strength, cockling and waviness in printing paper. Also, to create tools for understanding ink-paper interactions and strategies to improve them.

Contact: Erik Blohm, Øyvind Gregersen (PFI), Per-Åke Johansson, Kristin Syverud (PFI)

## 21 Packaging Printability and Identification

Aims to investigate whether aspects of flexographic print quality can be explained through making measurements of local variations. To deliver new and improved techniques for characterizing the crucial properties of high quality flexographic printing. To gain a comprehensive understanding of the influence of ink on adhesion between barriers and printed board. To develop the field of identification, based on the variations in the structure of paper.

Contact: Anita Teleman, Per-Åke Johansson, Göran Ström

## 23 Wood-Derived Renewables

The aims are to develop industrially viable methods for modifying the properties of cellulose fibres and polymer matrices and to develop new sustainable materials, i.e. paper products containing polymer and reinforced cellulose fibre 3D composites.

Contact: Kristina Wickholm, Fredrik Berthold, Mikael Lindström

To read more about the Cluster Research Programme 2009–2011, see [www.stfi-packforsk.se/crp2009](http://www.stfi-packforsk.se/crp2009).



Niklas Berglin

Niklas Berglin is one of the STFI-Packforsk personalities in its current lignin research. Among other things, he has been responsible for the combustion trials with lignin fuel in the FRAM2 Project, for example the successful lime kiln trials at Mönsterås, see right.

"I just as much enjoy working in the mills as I do sitting in front of a computer doing calculations. With mill trials, you get to be a researcher as well as actually participate in running the processes," says Niklas. "I spent a lot of time working as a process operator during my undergraduate studies, so I feel at home in most control rooms."

There will certainly be more involvement in mills for Niklas, since he has recently taken over the position of technical manager for the STFI-Packforsk LignoBoost demonstration plant. In cooperation with the staff at Bäckhammar, his work involves developing the plant and coordinating trials, using new liquors, or aiming at producing lignin for mill trials.

"We've been working a great deal with fuel preparation and handling. There are many practical problems to be solved, such as where to find the right equipment."

Niklas began his career as a chemical engineer from Chalmers, where he also got his licentiate degree in heat and power technology in 1996. After this, he was a consultant for a few years, when he worked mainly with the Chemrec black liquor gasification technology, before joining STFI-Packforsk (then STFI) in 2001. Today, he is a Major Project Manager and the acting manager of the Energy and Mill Systems Group.

"We're in a fortunate situation, where we're able to link our laboratory and modelling work to full scale trials. There are not many researchers who have the opportunity of doing this. It's very rewarding," emphasises Niklas. ●

**CONTACT:** [niklas.berglin@stfi.se](mailto:niklas.berglin@stfi.se)



## Successful trial to replace oil with new lignin biofuel

STFI-Packforsk has worked jointly with Södra and its Partner Customers to demonstrate the use of lignin as a replacement for fossil fuel in the lime kiln of a pulp mill, up to a degree of 100%.

"Replacing fuel oil with lignin has been one of the main aims of the FRAM2 Programme. The 3 day trial carried out at the Södra Cell Mönsterås Mill in April was very successful in showing that pulp mills may be entirely free from fossil fuels in future," says Per Tomani, Programme Director of the FRAM2 Research Programme at STFI-Packforsk.

"Lignin fits perfectly into our overall vision," remarks Albin Andersson, the Energy Coordinator at Södra Cell. "The active role of the pulp and paper industry in moving towards a sustainable society is becoming increasingly more important."

Many people were involved during the planning and preparation phases, which included the production of a suitable lignin powder, together with pilot-scale combustion trials and a fuel feeding pre-trial.

"This trial is a perfect example of how STFI-Packforsk can partner up with the industry to move swiftly from the laboratory stage to a full-scale mill trial," comments Niklas Berglin, a Research Manager at STFI-Packforsk, who led the full-scale trial in the 270 tonne per day

lime kiln, together with Per Olowson from Södra Cell R&D, as well as Tord Hultberg and Sven Persson from the Mönsterås Mill.

The process operators were very pleased with the way that the heat input to the kiln could be controlled when using the lignin fuel. The kiln was fired with only lignin for a few hours, surpassing the target set for the trial, while setting a 'world record' that the operating personnel were very proud of. Throughout the trial, an intensive sampling campaign was carried out to assure that the quality of the lime and the white liquor had not been affected. ●

**CONTACT:** [niklas.berglin@stfi.se](mailto:niklas.berglin@stfi.se)



**Mesaugnen är** i princip den enda kvarvarande förbrukaren av fossil olja i ett modernt massabruk, där processen i övrigt är självförsörjande på energi. STFI-Packforsk har tillsammans med Södra och andra samarbetspartners framgångsrikt prövat att ersätta olja med biobränslet lignin, som kommer från ved. I april 2008 genomfördes fullskaleförsök i Mönsterås med lyckat resultat.

Under några timmar kördes ugnen på enbart lignin – ett "världsrekord" enligt processingenjörerna.

– Eldningen med lignin passar bra in i vår helhetsyn, säger Albin Andersson, energisamordnare på Södra. Det blir mer och mer viktigt för vår industri att spela en aktiv roll på vägen mot ett hållbart samhälle.

# Using biofuels in lime kilns – a captivating subject

STFI-Packforsk organized a seminar and workshop on the use of biofuels in lime kilns on 24 September. In principle, the lime kiln is the only remaining user of fossil fuel in a modern pulp mill, where the process is generally self-sufficient in energy. On a global scale, the pulp industry consumption of energy in lime kilns is equivalent to 4 million m<sup>3</sup> of oil.

With unpredictable oil prices and climate change, it is not so strange to find that there is great interest in replacing fossil fuels with bio-based ones.

“The aim of the event was split up into three. We wanted to share experiences, identify possible gaps in knowledge and know-how and to build up a network for these subjects,” say Niklas Berglin and Rickard Wadsborn who were responsible for the seminar.

The seminar started with a series of sessions, with presentations from the point of view of mills and on the part of research and suppliers. In the latter part of the day, group discussions took place on three different subjects, viz. biofuel preparation, effects in the lime kiln and consequences in the chemical recovery cycle.

Niklas continues, “One thing that motivated all the groups was whether gasification or direct burning is preferred.”

He relates that experiences with the burning of biofuel are very good, when



it comes to overall economics and the saving of fuel, but that costs for maintenance and low availability are relatively high. It is also important to take into consideration how processes will be affected, for example, the quality of the lime, the building up of non-process elements, the capacity, etc.

The questions at issue arising from the seminar will be dealt with in the new Energy and Biofuels Cluster, in the Chemical Recovery Cluster and in the probable continuation of the FRAM Programme.

“The seminar may be held again in a few years’ time, when more experience has been gained in this field. But, for the time being, we’ve got a forum in which these issues can be discussed,” concludes Niklas. ●

**CONTACT:** niklas.berglin@stfi.se

## FACET aiming at realistic picture of chemical intake

The start-up of FACET, an EU Project, took place on 1 September. FACET stands for the *Flavouring, Additive and Food Contact Material Exposure Task*. There are 22 partners involved in this 4 year project, which has brought together all the organisations connected with foodstuffs and the materials in the relevant kinds of packaging and chemicals.

The aim of the Project is to construct a system for Risk Assessment of the chemical compounds that consumers are exposed to through the intake of foodstuffs. The work involved is being carried out entirely from the aspect of consumers’ health and it is being related to actual consumption in the EU.

“It is expected that the Project will produce a database for foodstuff intake and the amount of chemicals we consume. From all this, it should be possible to calculate and predict any possible risks involved. Hopefully, this will lead to more consumer adapted directives and legislation concerning attractants, flavourings and food additives, together with additives in the different kinds of materials that go into packaging,” says Kristina Salmén, who is responsible for the STFI-Packforsk section of the Project. ●

**CONTACT:** kristina.salmén@stfi.se

## COMING EVENTS

### DECEMBER

- 2-3 Conference: ‘STFI-Packforsk Analys- och provningsdagar’ Physical testing on pulp and paper
- 10 SustainComp General Assembly

### JANUARY

- 19-21 Packaging Diploma Course, I
- 20-21 PaperEdge, session III
- 27-28 Ekmandagarna

### FEBRUARY

- 4 ROND2009: Paper optics with new eyes
- 4-5 IGP Annual meeting
- 10 Seminar: Future research, development and education in the tissue business

For further information on coming events, see [www.stfi-packforsk.se](http://www.stfi-packforsk.se)

## STFI-Packforsk and Googol form a partnership

STFI-Packforsk and Googol, an innovation services and business development company, are now joining forces to focus on Innovation Services and Opportunity Scouting. As a solid and experienced team in their own fields, the two corporations have formed a partnership to explore emerging opportunities.

“The aim of Googol is to focus on exploring and developing assets and opportunities that are hidden in the network surrounding large organizations. We are convinced that our customers will benefit a great deal from this collaboration,” comments Anders Engstrom, Vice President of STFI-Packforsk.

**CONTACT:** anders.engstrom@stfi.se

## New Chairman of the Board

Mats Nordlander has been appointed new Chairman of the STFI-Packforsk Board of Directors. He is succeeding Peter Sandberg who recently took up the post as President of Papyrus AB.

Mats Nordlander is the Executive Vice President at Consumer Board, Merchants and Market Services, Stora Enso.

“We are very pleased to welcome Mats Nordlander as our new Chairman. I believe that his experiences in the market area will be very useful to STFI-Packforsk,” says Gunnar Svedberg, President. ●