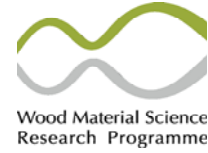


# Innovate wood



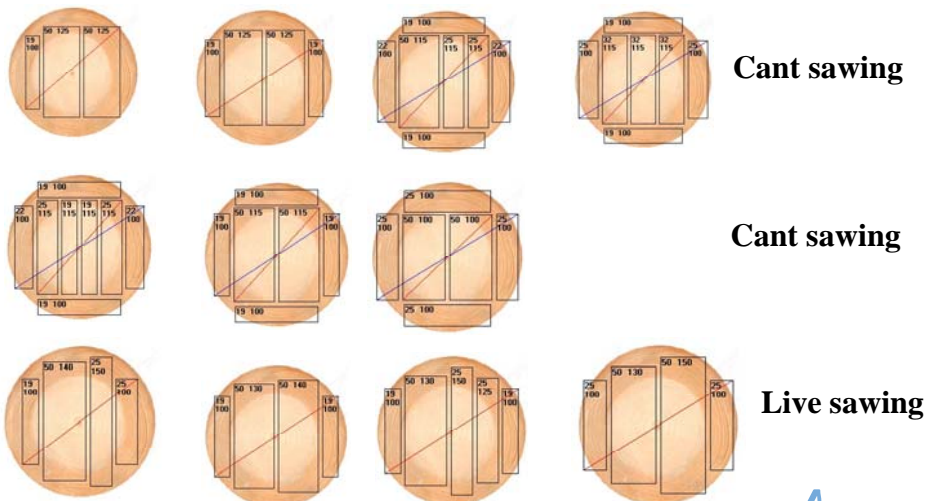
## How to increase the value of sawmill products

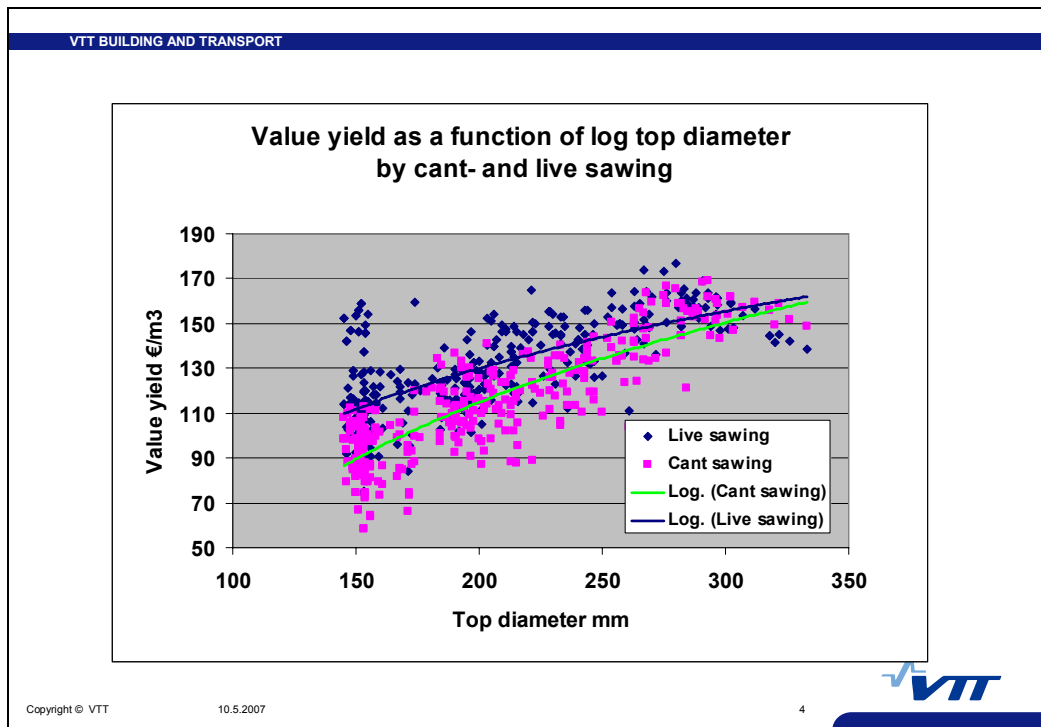
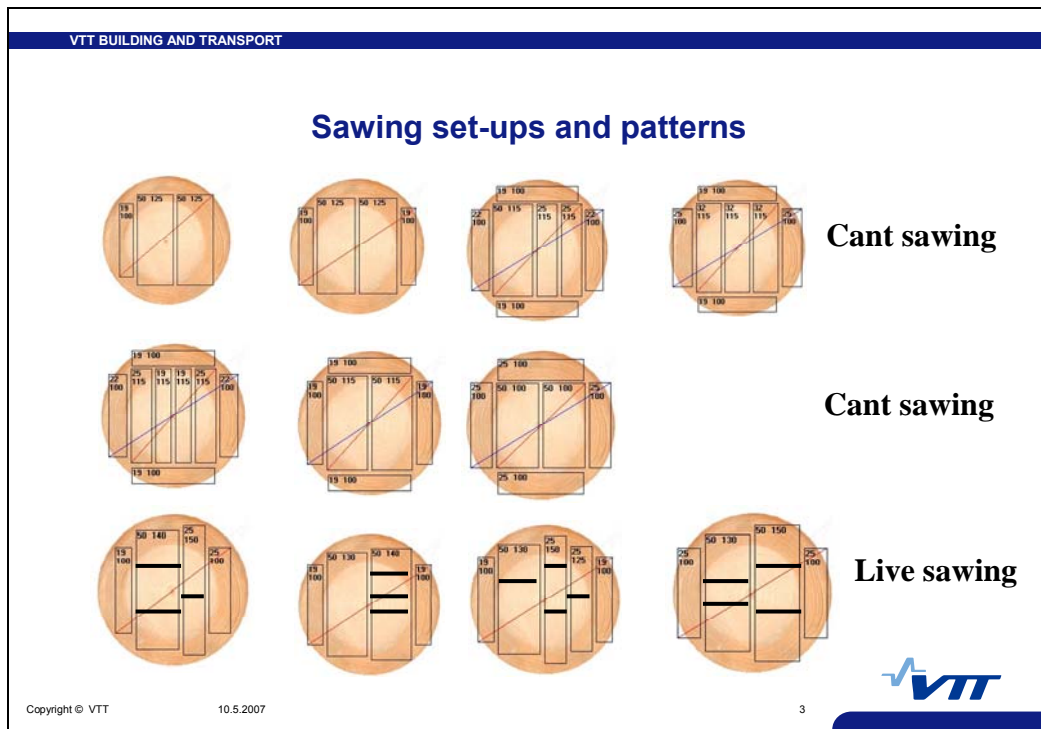
Arto Usenius, Antti Heikkilä and Tiecheng Song  
VTT -- Technical Research Centre of Finland

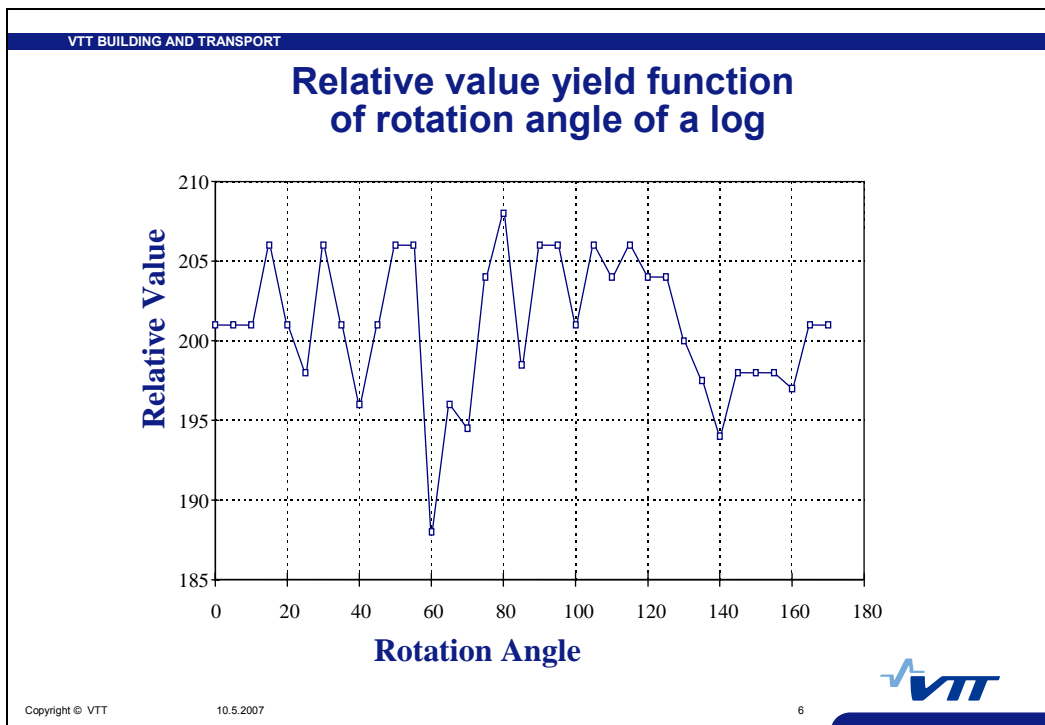
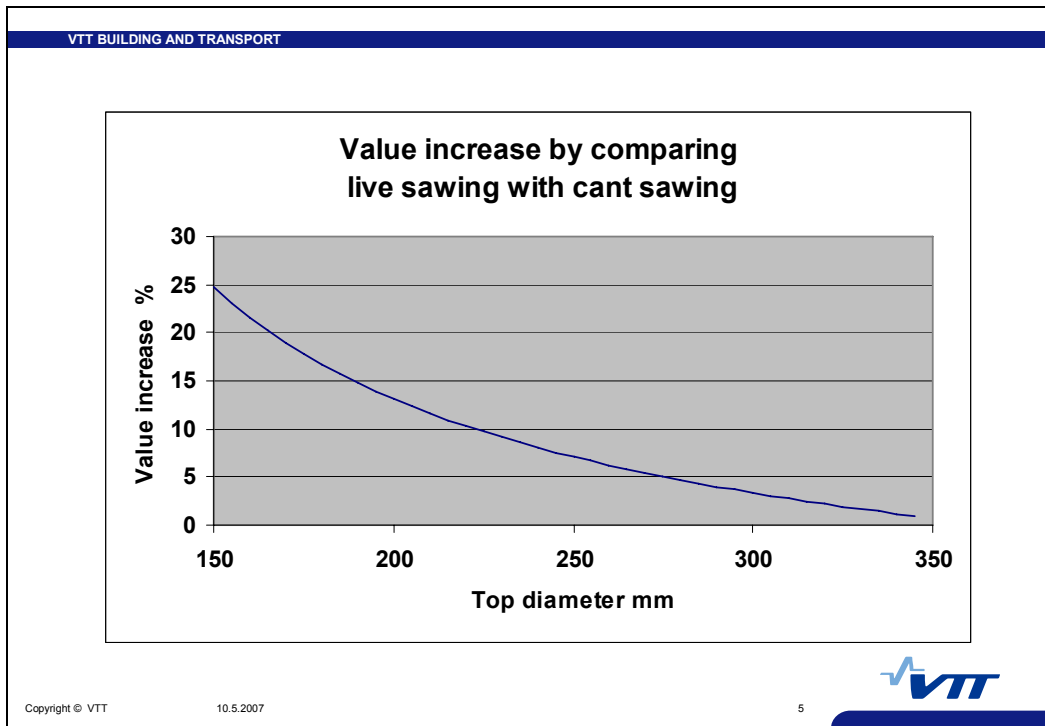
Innovood Seminar  
Stockholm, March 21, 2007

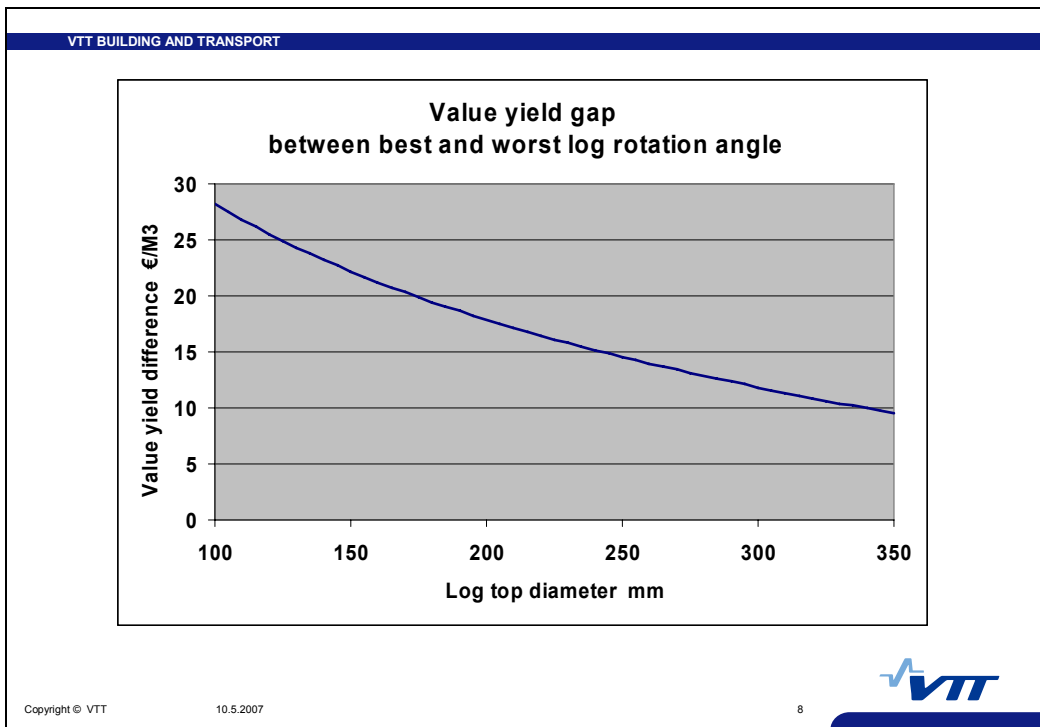
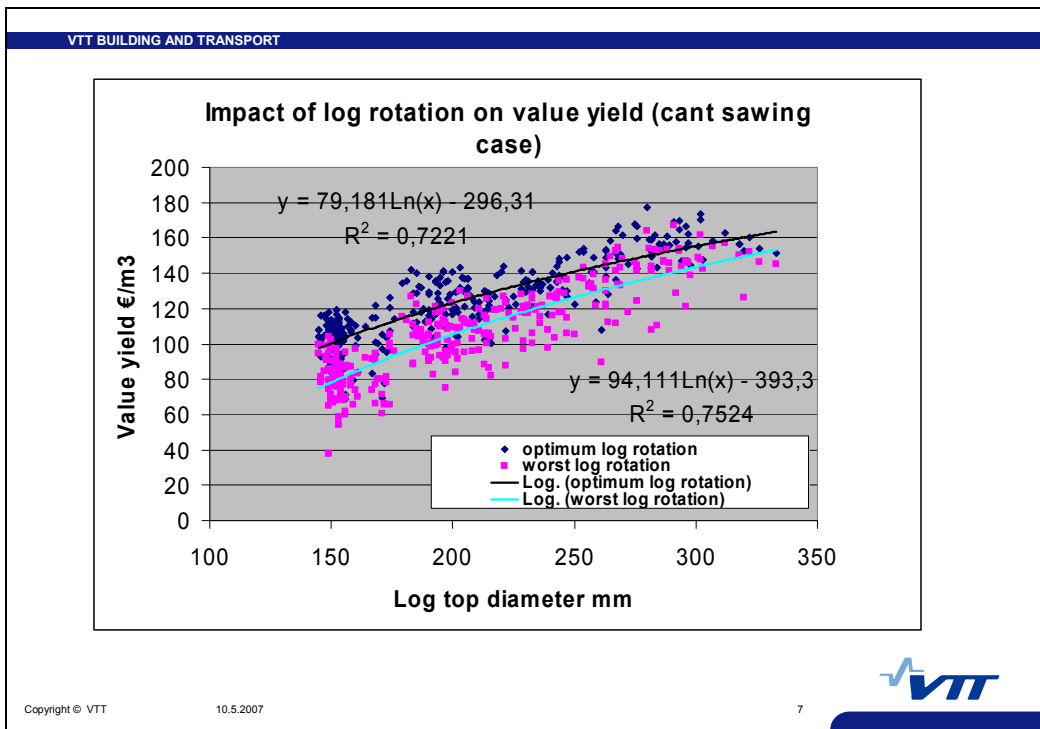
VTT BUILDING AND TRANSPORT

### Sawing set-ups and patterns



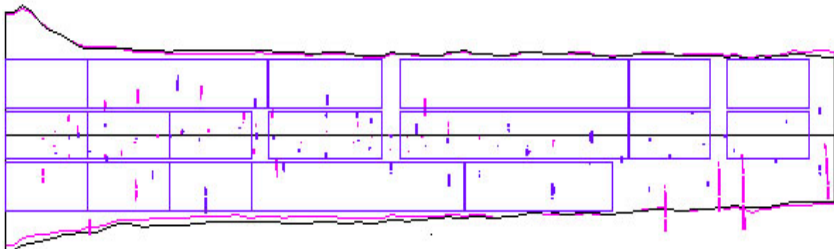







VTT BUILDING AND TRANSPORT

## Upgrading of sawn timber into value added components



Example of optimised sawing of a flitch

Copyright © VTT 10.5.2007 9



VTT BUILDING AND TRANSPORT

## Component products - quality specification

Product	Allowed knots
1	Knot free 4 faces
2	Knot free 3 faces
3	Fresh knots 4 faces
4	Fresh knots 3 faces
5	Fresh knots 4 faces, 1 black knot

Copyright © VTT 10.5.2007 10



