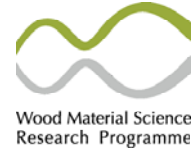


**Innovate**  
**WOOD**



## Demonstration of web-version of Innovood Tree Visualiser

*Åke Hansson, Thomas Grahn,  
Sven-Olof Lundqvist, STFI-Packforsk  
Sanna Härkönen, Univ. Of Joensuu*

Innovood Seminar, STFI-Packforsk  
Stockholm, March 21, 2007



## Goal

A version of the Innovood Tree Visualiser  
tailored for illustration, education, etc.

- + public
- + easy to access via internet
- + easy to use
- + useful for generation of illustrations  
for own presentations, publications, etc  
(with reference to source)



## Some features

- **Database with measured data on:**
  - > size, taper and growth pattern
  - > wood and fibre propertiesfor trees representing:
  - + spruce and pine
  - + old and young stands
  - + large to small trees within the stand
- **Models for:**
  - > size and taper
  - > wood and fibre properties
- **Simulation**
- **Presentation facilities including:**
  - > simulated and measured data
  - > possibilities to adapt scales for own use
  - and to "Save as" to file on your own computer

## Layout of the web-based Tree Visualiser

**Setup your parameters:**

Taperfile:

Property to show:

Property is:

Horizontal axis is:

Upper Calc. Rad. Limit:

Lower Calc. Rad. Limit:

Vert. Calc. Rad. Limit:

*Simulation environment: Sanna Härkönen, Web solution: Ake Hansson*

STFI-Packforsk AB | Phone +46-8-676 70 00 | Fax +46-8-411 55 18 | info@stfi.se | webmaster@stfi.se





## Demo

Some functionalities are demonstrated "live"

The web-based version will be available and shown via internet at the final meeting of the programme "Wood Material Science and Engineering" in Stockholm, May 22, 2007

